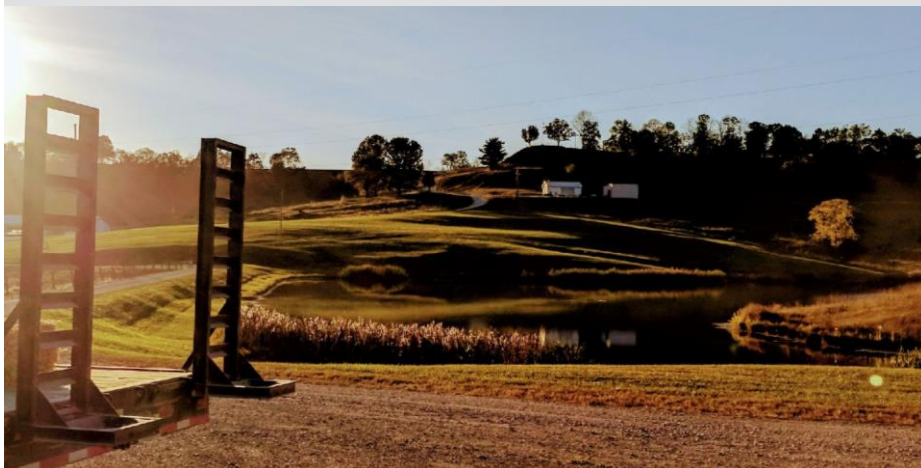


# NEWSLETTER

NOBLE COUNTY AGRICULTURE AND NATURAL RESOURCES

NOV-DEC | 2017



*Dear Readers,*

Thanksgiving is nearly here. I hope you will have a chance to slow down and enjoy the company of family and friends this holiday season. Something I started doing lately is sending greeting cards to loved ones around Thanksgiving. What is a more flattering and heartwarming complement than someone saying “I am thankful for you.”? I wish we all were a little more thankful for the little and big blessings in our lives. Each day we are given on Earth is a gift and opportunity to do good in the world. Are you taking the opportunities that are given and making the most of them? Are you greeting the day with a thankful heart? Are you treating others as you wish to be treated?

If we all played the game of life following the “Golden Rule” we would not really need any other rules. If each of us were courteous to one another and mindful of how our actions influence others, many of our rules and laws would be unnecessary. In conversation with people and even with myself, I find that we all question whether the enforcement of a rule or law is practical or helpful. The fact is rules and laws exist because somewhere along the line enough people lost sight of the “Golden Rule” pertaining to an issue (hunting, farming, driving, taxes, etc.) that a new rule was needed and enforcement necessary to protect society for the greater good.

Part of my job is to make people aware of laws pertaining to agriculture and natural resources, their purpose, their exemptions, and the enforcements in place when the law is broken. I am not an enforcer, but an educator. My colleagues and I are here to help you understand those laws and operate in a way that is beneficial for you. Within this newsletter are a few examples. Feel free to reach out with questions anytime. Have a happy holiday season everyone!

Sincerely,

*Christine Gelley* - OSU Extension Educator



**THE OHIO STATE UNIVERSITY**

COLLEGE OF FOOD, AGRICULTURAL,  
AND ENVIRONMENTAL SCIENCES

## **Noble County Extension Office**

**46049 Marietta Rd., Suite 2**

**Caldwell, OH 43721**

**Phone: 740-732-5681**

**Fax: 740-732-5434**

**Email: [gelley.2@osu.edu](mailto:gelley.2@osu.edu)**

**URL: [noble.osu.edu](http://noble.osu.edu)**

**Page 2: Tips for Predator Control**

**Page 3: Wreath Workshop**

**Page 4: Buckeye Shepherd's Sym.**

**Page 5: Ag Income Tax Issues**

**Page 6: Farm Talk Holiday Dinner**

**Page 7: Winter Prep Checklist**

**Page 8: Holiday Décor that Lasts**

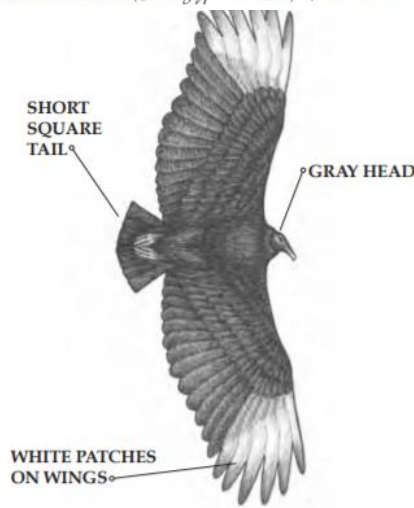
**Page 9: Beginning Beekeepers**

**Page 10: Reminders & Survey**

## Management Tips From: **Farm Talk Breakfast** Dealing with Predators of Cattle, Sheep, Goats, and Chickens



black vulture (*Coragyps atratus*) Species of Concern



### Predators are important...

- Indicators of a healthy ecosystem.
- Control populations of nuisance animals.
- Contribute to carcass cleanup.
- Add conservation interest.

### When the predator's prey is your livestock...

- Consider all possible factors leading to livestock death, including environmental.
- Get a positive I.D. of the culprit
- Use integrated control strategies.
- Frequently check livestock.
- Obey Federal and State Laws.
- Report livestock deaths to ODW & USDA.

### Comparing coyote and dog damage...

- Coyotes kill for food.
  - Experienced hunters will strike at the neck and drag the animal away.
  - Usually less than 3 animals at a time.
  - Preferably weaklings or young animals.
  - Small animals may be consumed entirely.
  - Begin feeding at the abdomen.
  - Organs and fatty tissues consumed first.
- Dogs kill for sport.
  - Usually very traumatic.
  - Many animals may be injured or killed, in a sloppy manner.
  - Rarely consume or relocate the animal.
  - Begin feeding on the hindquarters and rarely return to feed again.

### Regulations...

- **Bears, Bobcats, and Black Vultures** are protected species.
  - Must apply for a permit if damage is incurred and control necessary.
  - Damages from animals reintroduced to the wild by the federal government or protected by federal law are eligible for compensation through the Livestock Indemnity Program, which is overseen by the Farm Service Agency.
  - A federal migratory bird depredation permit can be issued for black vulture problems.
  - Secure a permit before killing any protected animals.
- **Snakes**
  - Although the law is patchy on snakes, every effort should be made to avoid euthanization. Snakes are highly valuable for rodent control. Problem snakes should be captured and released at least 1 mile from the problem area.
- **Dogs & Cats**
  - Issues with domestic animals should first be addressed neighborly.
  - The presiding contact for issues with domestic (or feral) dogs is the County Dog Warden.
  - Issues with domestic or feral cats are not regulated or under public administration. The general rule of thumb is "trap, neuter, return."
- **Coyotes\*, Foxes\*, Raccoons\*, Skunks\*, Opossums\*, Weasels\*, Mink\***
  - Nuisance or sick animals\* may be trapped without a permit, but it is illegal to live trap and relocate them to a new area. In order to prevent the possible spread of diseases in Ohio, all live trapped animals\* must be released again on the homeowner's property or humanely euthanized.
  - Hunting/Fur/Trapping Season: Nov. 10- Jan. 31. No Limit. Coyote never closes. All others close during deer gun season.

Full regulations can be found at: [wildlife.ohiodnr.gov](http://wildlife.ohiodnr.gov)



**You are invited to a...**



Each session is limited to **12 attendees.**

At the Ball-Caldwell House:

**16 East Street Caldwell, OH 43724.**

Sessions are **\$20 per participant** including hands-on instruction, materials to create a fresh evergreen holiday wreath, and light refreshments.

This event is offered by the **Noble County Master Gardener Volunteers.**

Kindly call **740-732-5681** to register no later than **November 22nd.**

**Three Sessions:**

November 29<sup>th</sup>  
**FILLED**  
10 a.m. – 12 p.m.

Or

**November 29<sup>th</sup>**  
**2 p.m. – 4 p.m.**

Or

November 30<sup>th</sup>  
**FILLED**  
1 p.m. – 3 p.m.



**THE OHIO STATE  
UNIVERSITY**

COLLEGE OF FOOD, AGRICULTURAL,  
AND ENVIRONMENTAL SCIENCES

CFAES provides research and related educational programs to clientele on a nondiscriminatory basis. For more information: <http://go.osu.edu/cfaesdiversity>.

The Ohio Sheep Improvement Association invites you to the Buckeye Shepherd's Symposium.

This year's symposium will begin with the **Shepherd's College** from 2-5 p.m. on **December 1, 2017 at Fisher Auditorium** on the OARDC Wooster Campus. Dr. Erin Recktenwald of Michigan State University will lead off with her presentation "Examining the Profitability of Several Sheep Production Scenarios with a Simulation Model". Dr. Francis Fluharty of The Ohio State University will follow with presentations on "The Realities of Finishing Lambs on Grass vs. Grain" and "Feeding Ewe Lambs for Maximum Growth and Reproduction".

The first annual **Young Shepherd's Program** will continue the evening for shepherds ages 18-35 at **Jakes Steakhouse** in Wooster. Seating for dinner will begin at 6:00 p.m. and the program will conclude at 8:30 p.m. This free event is open to young shepherds who are eager to meet and socialize with their peers while learning from one another. A panel of young agricultural professionals, who are also shepherds, will be interviewed about how they became shepherds, experienced in their fields of expertise, trials, and successes. Those who register before November 17 will enjoy a buffet lamb dinner, conversation with peers, inspirational and educational materials, and the chance to win a door prize.

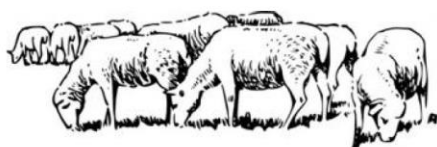
The symposium continues on **Saturday, December 2 from 7:30 a.m. to 4:00 p.m. at the Shisler Conference Center** at OARDC. Programs and workshops will be offered throughout the day that focus on improving the profitability of the sheep operation through nutrition, reproduction, economics, and marketing. Lunch will be included, featuring carved leg of lamb. During the morning sessions, high school aged students are invited to tour The Ohio State University Agricultural Technical Institute with the university's recruiting staff.

For the full schedule of events turn to page 8. Registration forms are available on page 7 (Young Shepherd's Program) & page 9 (BSS). You can also find the schedule and registration forms online at <http://ohiosheep.org/osia.html>.

If you have any questions about the content of the Buckeye Shepherd's Symposium or how to register, please contact Christine at 740-732-5681 or [gelley.2@osu.edu](mailto:gelley.2@osu.edu).

## OSIA Young Shepherd's Program

### December 1, 2017



#### Enjoy:

- \* Buffet Dinner
- \* Conversation with Peers
- \* Professional Speakers
- \* Door Prizes

**Seating at 6:00 p.m.**  
**Dinner at 6:30 p.m.**

**Jakes Steakhouse**  
6655 Lincoln Way East  
Wooster, OH 44691



**THE OHIO STATE  
UNIVERSITY**

COLLEGE OF FOOD, AGRICULTURAL,  
AND ENVIRONMENTAL SCIENCES





## Ag & Natural Resources Income Tax Issues Webinar

Monday, December 18, 2017 (All locations)

9:00 a.m. – 3:00 p.m.

If you are a farmer or represent farmers or rural landowners, this five-hour webinar co-presented by Phillip Harris, Director of Tax Insight LLC, Attorney and Professor Emeritus of Agricultural and Applied Economics at the University of Wisconsin-Madison, and Greg Bouchard, Senior Extension Associate at Cornell University and Director of Cornell Income Tax Schools, will cover special issues with farm tax returns.

You can choose to attend a host location or participate at home or in the office. Host locations will provide a facilitator, refreshments and lunch. You are encouraged to bring your computer as there will be real-time Q&A. If you choose not to attend a host location, a web address will be e-mailed to you prior to the webinar.

Registration which includes the workbook is \$130. Register by mail or on-line at <http://go.osu.edu/AgIssuesReg>

### Topics include:

- Agricultural Income and Expenses
- Net Operating Losses (NOLs)
- Form 4797
- Buying and Selling Farmland
- Rental Property
- Disposition of Converted Wetlands
- Demolition of Structures
- And more....

**NOTE:** The Agricultural Tax Issues Workbook will be mailed to ALL attendees. You must register before December 11 to ensure delivery of the book prior to the webinar.

Continuing Education Credits are offered (pending approval):

- Accountancy Board of Ohio, CPAs (6 hours)
- Office of Professional Responsibility, IRS (6 hours)
- Supreme Court of Ohio, Attorneys (5 hours)

Certificates will be mailed to participants following webinar.

The following locations will serve as hosts for this workshop:

**Auglaize County OSU Extension Office**  
208 S Blackhoof St., Wapakoneta, OH 45895

**Fairfield County OSU Extension Office**  
831 College Ave., Lancaster, OH 43130



**Noble County OSU Extension SE Regional Office**  
16714 Wolf Run Rd., Caldwell, OH 43724



**Wayne County OARDC Fisher Auditorium**  
1680 Madison Ave., Wooster, OH 44691

**Clermont County OSU Extension Office**  
1000 Locust St., Owensville, OH 45160

**Miami County OSU Extension Office**  
201 W. Main St, Old Courthouse, Troy, OH 45373

**Putnam County OSU Extension Office**  
1206 East Second St., Ottawa, OH 45875

**Wyandot County Elks Lodge**  
320 E. Wyandot Ave. Upper Sandusky, OH 43351

**New in 2017:** Ag Income Tax Issues Webinar attendees will have the opportunity when registering to be added to our agricultural income tax practitioner list that we are creating as a resource to help farmers and land owners find qualified preparers. This is not an endorsement from OSU, just a resource for our clientele.

### At-home Webinar

Web address will be e-mailed prior to event

**<http://go.osu.edu/taxschools>**

CFAES provides research and related educational programs to clientele on a non-discriminatory basis.

For more information: <http://go.osu.edu/cfaesdiversity>



**THE OHIO STATE UNIVERSITY**

COLLEGE OF FOOD, AGRICULTURAL,  
AND ENVIRONMENTAL SCIENCES

### OSU Income Tax Schools

34 Ag. Admin. Building  
2120 Fyffe Rd.  
Columbus, OH 43210  
Phone: 614-292-2433





# HOLIDAY FARM TALK DINNER

Topic: Is it a pine?

Guest Speaker:  
Clifton Martin  
Muskingum Co. OSU Extension

The Noble County Master Gardener Volunteers will host the December Farm Talk Dinner with a special focus on evergreens. This event features a catered meal, holiday décor, and show and tell. Attendees are invited to bring cuttings from evergreens in their landscape for I.D.

MONDAY  
December 11<sup>th</sup>

6-8 P.M.

OSU Extension SE Region Office  
16714 Wolf Run Road  
Caldwell, OH 43724

Cost: \$15

Contact: 740-732-5681 to RSVP by Dec. 8

T. Davis Sydnor, The Ohio State University, Bugwood.org



THE OHIO STATE UNIVERSITY

COLLEGE OF FOOD, AGRICULTURAL,  
AND ENVIRONMENTAL SCIENCES

# **Winter Readiness Checklist**

Winter is coming... Are you ready?

- Stock up on sidewalk salt, kitty litter (for stuck tires), and windshield wash that tolerates freezing temperatures.
- Have your heating system checked, chimney swept, and fuel available.
- Check your vehicle's tires, brakes, lights, wipers, belts, and fluid levels.
- Install additional exterior lighting and hand railings in high traffic areas.
- Seal cracks and crevices on exterior walls.
- Make sure domestic animals always have access to thawed water.
- Insulate any water pipes that have potential to freeze.
- Check smoke and carbon monoxide detectors.
- Have an emergency kit at home and in your car that contains:
  - Flashlight
  - Extra Batteries
  - Radio
  - First Aid Kit
  - Pocket Knife
  - Necessary Medications & Eyewear
  - Blanket
  - Matches
  - Extra Warm Clothes
  - Compact Shovel
  - Common Tool Kit
  - Non-Perishable High-Energy Food Items
  - Bottled Water
  - Jumper Cables
- Have a list of emergency numbers on your refrigerator and your phone.

## **Reminders:**

- Always do a perimeter check of your car and fully defrost your windshield before driving.
- Always leave your garage door open while the car is running for ventilation.
- Shovel snow wisely, take small scoops, use your whole body, and stay warm & hydrated.
- If you become stranded in a car during adverse weather, stay in the vehicle until help arrives.  
Conserve fuel and battery power by running the engine for 10 minutes each hour, using the car battery to charge devices and turn on the lights while the car is running.



# Creating and Caring for Fresh Holiday Decor

Decorating for the holidays is an activity many anticipate with joy. Bring the outdoors indoors this holiday season with your own homegrown decoration. For centuries, evergreen boughs have decorated homes during the winter months. The long lasting greenery is a symbol of eternal life and a reminder of spring's return. Fresh greenery can brighten a room and add a pleasant scent to the atmosphere. Fresh evergreen décor can cost a pretty penny from a florist, but with a bit of creative flair you can fashion your own at little to no cost.

Now is the time to prune woody perennials, which gives you an excellent opportunity to collect greenery for decorating. Put the health of your landscape plant ahead of your desire to collect pretty foliage. Make clean cuts with clean tools and evenly prune trees and shrubs to preserve their shape and promote future growth. Try to make one cut per branch to give you the best opportunity for decorative options. You can always cut smaller sections from large sections later on.

Some plants that work well for crafting fresh arrangements include: cedars, firs, holly, ivy, junipers, magnolia, pine, spruce, arborvitae, hemlock, and cypress. Most will last longer as outdoor décor than when used indoors. Never place evergreen foliage near heat sources because it is highly flammable.

Once you have finished collecting your material, soak the branches in water overnight before working with the material. This will rehydrate the plant tissues, keeping your decor fresher for longer and in turn reduce the risk of bringing a messy fire hazard into your home. Let the surface of the foliage dry and if desired, spray it with a preservative to seal in the moisture. If the greenery is brittle to the touch, discard it. Also, keep in mind that many evergreen berries are poisonous if consumed, so keep them away from children and pets. To extend the life of your arrangements keep them in a cool location and do not display them in direct sunlight or directly on glass.

Wreaths, swags, and garlands are popular holiday décor. Upright arrangements are also wonderful for centerpieces and are eye catching for decorating corners of rooms. Add fresh or dried fruit or flowers to your personal taste or dress up the display with bows or holiday ornaments. Do it yourself kits, tools, and décor bases are available in most craft stores.

Not ready to do it yourself? Join the Master Gardeners for the Holiday Wreath Workshop (details were on page 3).





# Beginner's Beekeeping Class

Learn the basics of beekeeping, pollination, & honey collection.

**Instructor:** Don Crock- Noble County Bee Inspector & Past Association President

**Objective:** Learn about the basics of beekeeping, pollination, and honey collection. You will learn what equipment is needed, how to handle honeybees, problems for our bee population and resources from our local bee club to assist you in getting started.

**Sessions:** There will be two sessions in the beginner's beekeeping class; A 5-hour classroom session on Saturday, Feb. 3, 2018 and a 2-hour on-site session at Don Crock's apiary on a later date.

**Cost:** \$35 including a textbook, membership to the Guernsey Noble Beekeepers Association, and class materials. Additional attendees from the same household can be added to the class for \$10.

**Enrollment:** First come, first serve. Contact Don Crock at 740-581-1883 or [doncrock@yahoo.com](mailto:doncrock@yahoo.com) with your name and contact information no later than Jan. 26.

---

SATURDAY  
**FEBRUARY 3**  
9 A.M. – 2 P.M.

---

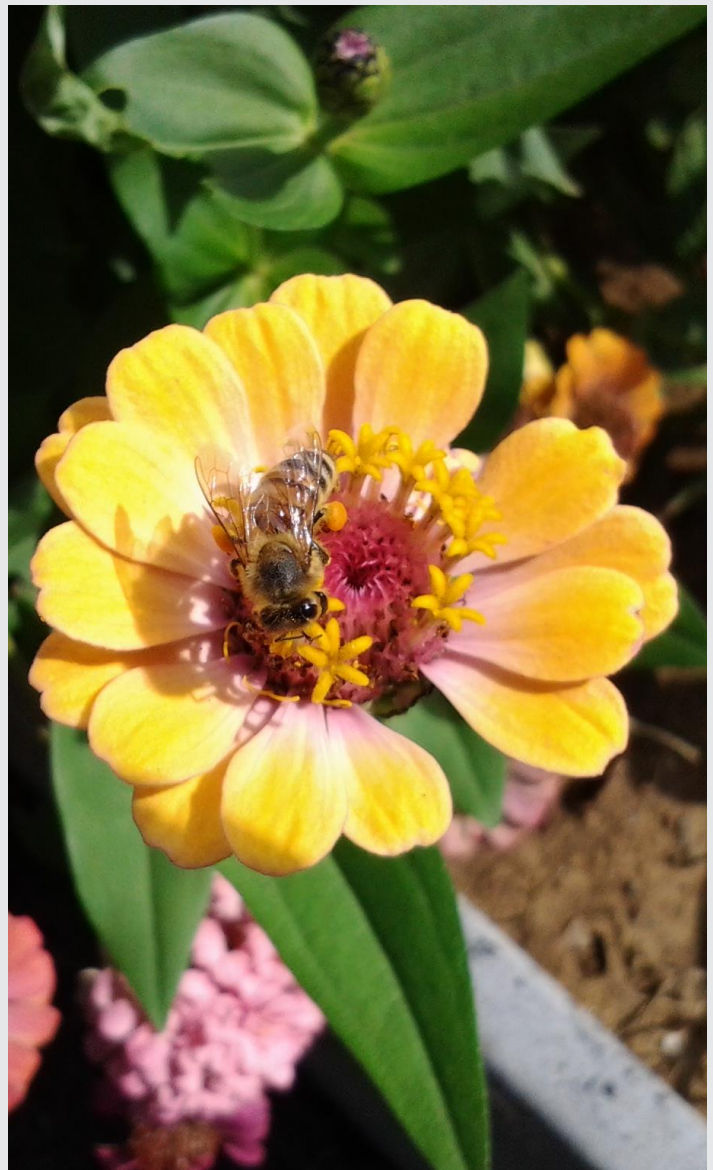
**Location:** OSU Extension SE Region Office  
16714 Wolf Run Road Caldwell, OH 43724

**Cost:** \$35

**Contact:** 740-581-1883 or 740-732-5681

[guernseynoblebeekeepers.com](http://guernseynoblebeekeepers.com)  
[noble.osu.edu](http://noble.osu.edu)

CFAES provides research and related educational programs to clientele on a nondiscriminatory basis. For more information: <http://go.osu.edu/cfaesdiversity>



**THE OHIO STATE UNIVERSITY**  
COLLEGE OF FOOD, AGRICULTURAL,  
AND ENVIRONMENTAL SCIENCES

## Announcements & Reminders- *Mark your calendars!*

- A new representative is needed for agriculture and natural resources on the Noble County Extension Advisory Committee to serve a two year term. Current representatives are Tabitha Weisend (term exp. 2018) and David Sayre (term exp. 2019). If you are interested in serving, please call Christine at 740-732-5681.
- Pesticide Applicator Recertification and Fertilizer Recertification Training will be held January 25 beginning at 4 p.m. and running until 9 p.m. at the Mid-East Career Center in Buffalo. The Ohio Department of Agriculture will notify you if it is time for you to recertify.
- Ohio Beef School will be offered as a webinar series again in 2018 with a broadcast location in Caldwell. Details will be announced soon.
- Please complete and return the survey below to help develop programming efforts in 2018.

### OHIO STATE UNIVERSITY EXTENSION

#### Noble County Agriculture & Natural Resources Clientele Interest Survey

Please take a few minutes to complete this questionnaire. We will use the information we receive to provide programming and information that will be of value to your interests. Personal information is optional. *Thank you for helping us better serve our community!*

Please circle the areas below that you would be interested in receiving information/programming on in the future.

- Livestock Management
  - Beef
  - Sheep
  - Goats
  - Swine
  - Poultry
  - Bees
  - Other:
- Crop Production
  - Corn
  - Beans
  - Wheat
  - Vegetable
  - Fruit
  - Other
- Pasture Management
  - Forage
  - Fencing
  - Water Systems
  - Other:
- Master Gardener Volunteers
- Home Gardening
- Meat Processing
- Forestry
- Machinery
- Composting
- Mineral Rights
- Pond Management
- Wildlife Management
- Other:

Name	Address	Phone/Email



**Return form to:**

Christine Gelley, ANR Educator  
OSU Extension Noble County  
46049 Marietta Rd., Suite 2 Caldwell, OH 43724  
740-732-5681  
Email : [gelley.2@osu.edu](mailto:gelley.2@osu.edu)

CFAES provides research and related educational programs to clientele on a nondiscriminatory basis. For more information:  
<http://go.osu.edu/cfaesdiversity>.