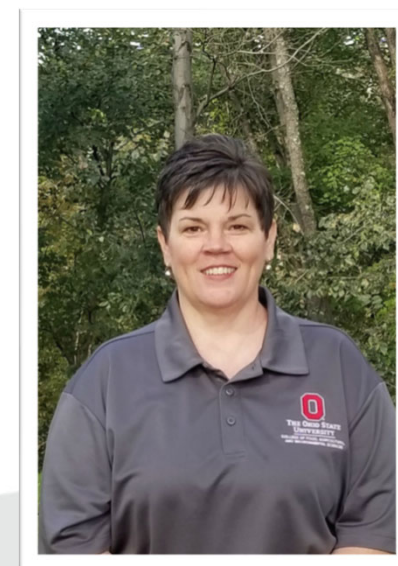


COVID-19

Economic Mitigation & Recovery Resources

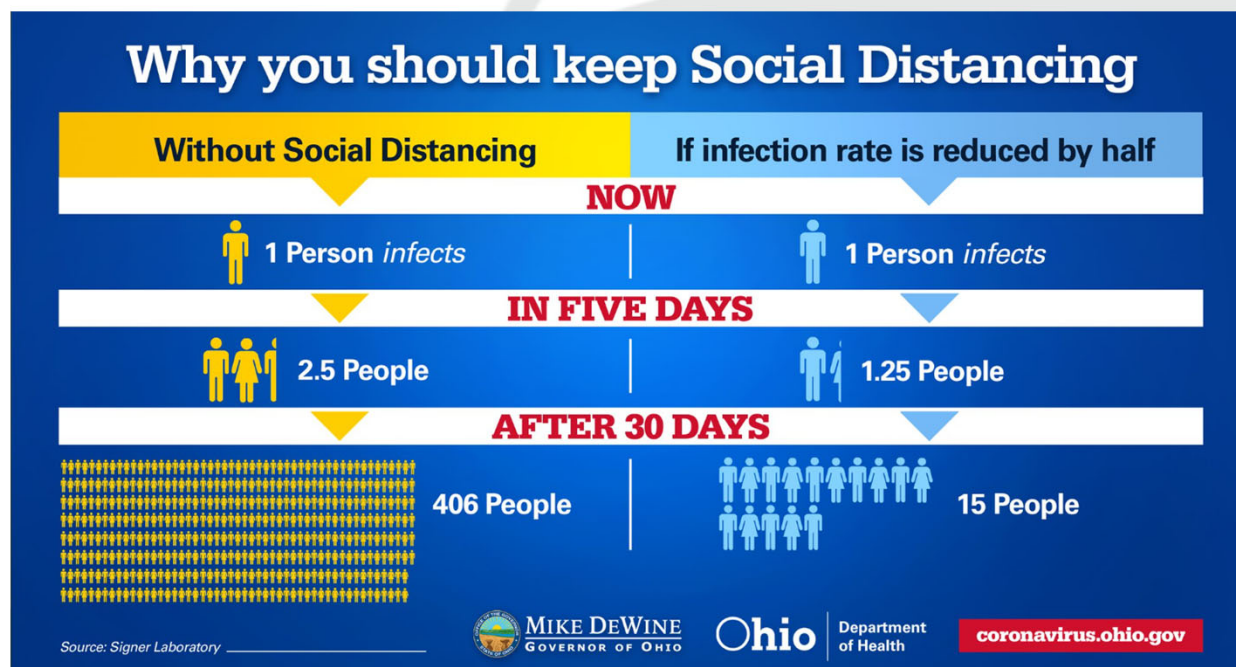
April 24, 2020

Gwynn Stewart, M.S.
Community Development Educator
OSU Extension, Noble County



THE OHIO STATE UNIVERSITY

COLLEGE OF FOOD, AGRICULTURAL,
AND ENVIRONMENTAL SCIENCES



THE OHIO STATE UNIVERSITY

COLLEGE OF FOOD, AGRICULTURAL,
AND ENVIRONMENTAL SCIENCES

Noble County COVID-19 Economic Mitigation & Recovery Resources



- OSU COVID Knowledge Exchange
Visit <http://kx.osu.edu/covid-19>
- OSU Extension - Noble
Community Development COVID Page
Visit www.noble.osu.edu
- www.NobleCountyOhio.gov



THE OHIO STATE UNIVERSITY
COLLEGE OF FOOD, AGRICULTURAL,
AND ENVIRONMENTAL SCIENCES

- Caldwell Public Library
- Caldwell Public Schools
- Noble Local Schools
- Noble County Job & Family Services

**Noble County
Broadband
Hot Spot
Access**





Government Offices call in
advance or visit
www.noblecountyohio.gov

Noble County
Small Business
Development Fund

Call OSU Extension
740-305-3177



Economic Impact

- Nearly 59,800 Ohio businesses received over \$14 billion in Payroll Protection Program relief - *(7th in the nation)*
- Next Round is available soon!



CORONAVIRUS
EMERGENCY ANS

Small Business Loans

- Paycheck Protection Program
 - If you receive funds from this program be sure to keep careful records for forgiveness portion
 - Some recommendations we've heard:
 - Consult an Accountant
 - Deposit PPP Funds in a separate account
 - Create paper tracking (invoices/copies of checks or copies of payroll, etc.)



THE OHIO STATE UNIVERSITY

COLLEGE OF FOOD, AGRICULTURAL,
AND ENVIRONMENTAL SCIENCES

Returning to Work

- **Checklist for Businesses/Employers - Protecting Against COVID-19**

[Download Recent Employer Checklist](#)

Additional resources:

[CDC's Interim Guidance for Businesses and Employers](#)

[Ohio Emergency Makers' Exchange](#)

Share and purchase personal protective equipment created through the ingenuity of Ohio manufacturers



THE OHIO STATE UNIVERSITY

COLLEGE OF FOOD, AGRICULTURAL,
AND ENVIRONMENTAL SCIENCES

COVID-19



**ADDRESSING PPE NEEDS
IN NON-HEALTHCARE
SETTING**

[Link to
Resource](#)



SOURCE: FEMA

Preparing to Return to Work

- What challenges do you face in resuming operations?
Financial? Safety & Hygiene? Loss of customers? Supplies and materials? Legal? Other?
- What is your current staffing and production status? What will it be in six months?
- What kind of help do you need to resume operations initially and then to get back to full speed?
- Are you concerned that your workforce will return when you are ready to resume operations?
- What information or guidance would be helpful as you plan and implement your normal operations?
- How much time will be needed to resume operations?
- Do you have a plan for reopening assuring social distancing & recommended sanitary protocols?
- What types of changes are you implementing?
- Are you using any sort of guidance documents/references/protocols/standard operating procedures from other sources or experts?



THE OHIO STATE UNIVERSITY

COLLEGE OF FOOD, AGRICULTURAL,
AND ENVIRONMENTAL SCIENCES

Returning to Work

- What types of materials will you need?
 - Masks
 - Face shields
 - Plastic barriers
 - Thermometers
 - Hand sanitizers
 - COVID Test kits
 - Gloves
 - Other
- Are you able to procure all these items?



THE OHIO STATE UNIVERSITY
COLLEGE OF FOOD, AGRICULTURAL,
AND ENVIRONMENTAL SCIENCES



Department of
Job and Family Services

Mike DeWine, Governor
Kimberly Hall, Director

News Release

- **Ohio Begins Implementing New Federal Unemployment Programs**
- Starting April 24, Ohioans who are unemployed as a result of coronavirus pandemic but who don't qualify for regular unemployment benefits can begin pre-registering for Pandemic Unemployment Assistance.
- This is a new federal program that covers many more categories of workers
- To pre-register, Ohioans should visit unemployment.ohio.gov and click on "Get Started Now."
- The benefit amount will be similar to traditional unemployment benefits, plus an additional \$600 per week through July 25.

More details are also available online.

Source: ODJFS Press release: April 23, 2020



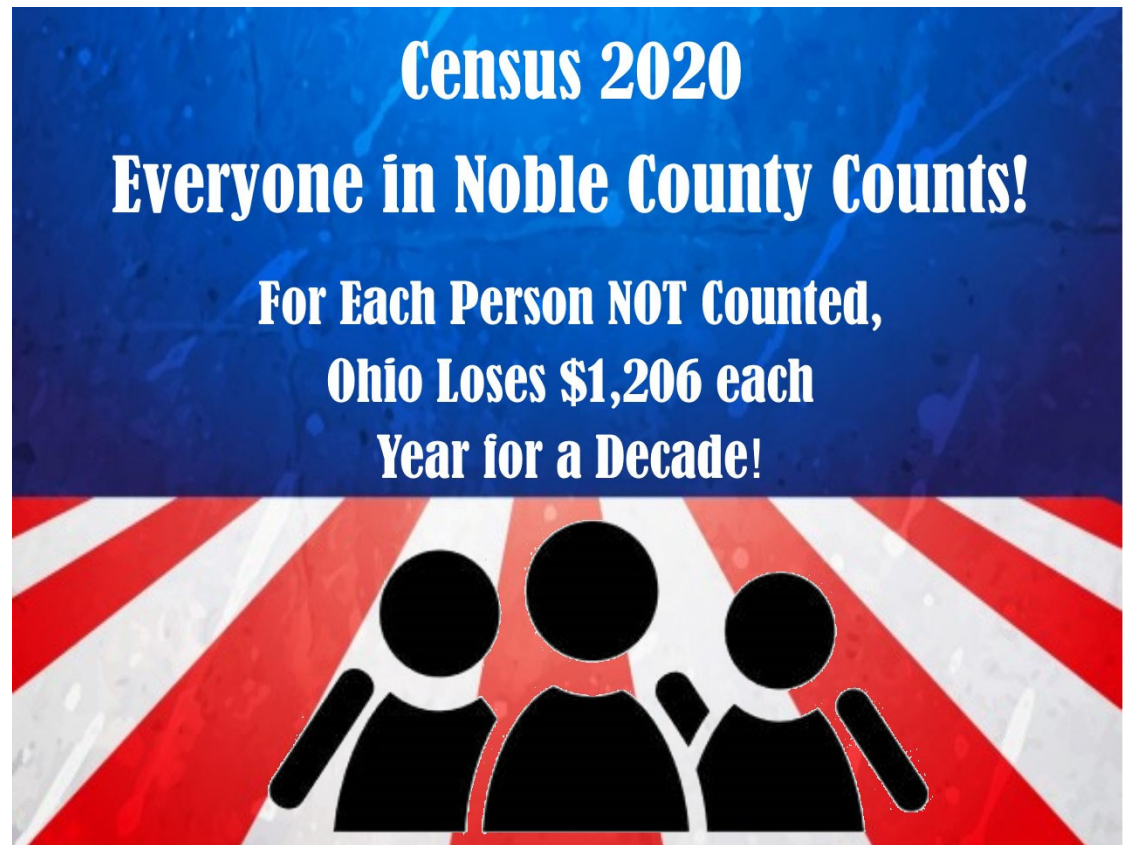
Everyone in Noble County Counts!

United States®
**Census
2020**

**As of April 23,
ONLY 51.6% of
Noble County has
completed the
2020 Census!**

1-844-330-2020

Learn More About Census 2020
& Be Counted!



Gwynn Stewart, M.S.
Community Development Educator

**Ohio State University Extension Noble County
Community Development**

46049 Marietta Road, Suite 2 Caldwell, OH 43724

Phone: 740-305-3177

Stewart.1818@osu.edu
noble.osu.edu/

www.facebook.com/osuenoble/



THE OHIO STATE UNIVERSITY

COLLEGE OF FOOD, AGRICULTURAL,
AND ENVIRONMENTAL SCIENCES